



Sandweiler School Report 2023/2024



Legal information

The "Schoulbuet" is a publication of the Sandweiler municipal administration under the responsibility of the college of the mayor and aldermen, which is published once a year. The "Schoulbuet" is distributed free of charge to all households in Findel and Sandweiler.

Coordination and contact person:
Susana Dinis Martins, Sonja Lang

Editors:
Susana Dinis Martins, teachers, Sonja Lang

Photos / Illustrations:
Susana Dinis Martins, teachers, Sandweiler

Photo Club:
Design and production:
Graphicube limited liability company (s.à r.l.)

Printed by:
Imprimerie Reka stock corporation (s.a.)

Publication date:
September 2023

© Administration communale de Sandweiler - All rights reserved



Three Cheers for State Education!



New impetus for high quality education.

As the new Mayor of Sandweiler and chair of the school commission (commission scolaire), I am delighted to welcome everyone involved in Sandweiler's education sector, I look forward to working together and wish everybody happiness and success.

You can rest assured that, in the College of Aldermen, we have decided to listen carefully and responsibly to all those involved in school life in our municipality: the teachers in the first place, then the support staff, and all those who, in one way or another, take part in the work of passing on the tools to our children to enable them to develop their powers and find their way in an increasingly complicated world.

This document is intended to inform, guide and help you to get your bearings in the range of school and extracurricular activities provided, which is often not all that easy.

I therefore call upon everybody involved to continue to maintain open-mindedness and commitment and to be always ready to listen to young people and their parents, focusing on one of the credos of my term of office: upholding the public interest and, in this case, firm support for State education over all private interests. In the domain

that concerns us here and now, it is a matter of giving state schools the means to impose themselves in the face of the private sector, which is constantly seeking to extend its reach and introduce a two-tier school system. All young people, as a matter of principle, have the right to an education, personalised if necessary, regardless of their social origin, their religion, the colour of their skin or any other consideration.

To this end, the purely educational activities of early childhood and preschool education are just as important as the others, not forgetting extracurricular activities and informal education. According to the dictionary, the latter corresponds to the process of lifelong learning, through which individuals adopt behaviours and values and gain skills and knowledge on the basis of the educational influences and resources of their own environment and daily life.

It is neither my role nor my intention to prescribe anything whatsoever. The road map is for the most part laid down for us by the national authorities.

But it is up to each person involved to take responsibility and set an example in order to ensure that the children entrusted to us leave our municipal education system with the means and tools to succeed in their subsequent education. Or simply in life.

So long live collaboration between everyone involved in the school community in the best interests of our children.

I wish everybody an excellent school year!

Jacqueline Breuer
Mayor of Sandweiler



Contents

Legal information	2
Three Cheers for State Education!	3
Contents	4
Good to Know	
Good to Know	5
Grants and Allowances	8
School Calendar 2023/ 2024	9
Start of the school year	9
School Transport - Pedibus	10
School Shuttle Service	11
Municipal Infrastructures	12
School Organization 2023/2024	
Cycle 1 – early childhood	14
Cycle 1 – preschool education	16
School Rules at Sandweiler Elementary School Cycle 1	18
School diary 2023/ 2024	19
Cycle 2	20
Cycle 3	22
Cycle 4	24
School Rules at Sandweiler Elementary School Cycle 2- 4 "Um Weier"	26
Sandweiler school playgrounds	27
"Léierstiffchen"	28
General information	
General Information	30
The Regional Directorates	33
The Education System in Luxembourg	33
Rue J.B.Weicker	35
iPads at School	35
Special features at the Sandweiler School	
Social Projects at Sandweiler	36
Teaching Assistant Dog	39
The School Development Plan (SDP)	40
Extracurricular Supervision	41
The School Multimedia Library	42
Projects linked to reading	43
Extracurricular Supervision	
Maison relais (Childcare centre)	44
Piwitsch Day Nursery	47
Extracurricular supervision by Piwitsch non-profit organization (a.s.b.l)	47
Maison des Jeunes	48
LASEP	50
Associations page	51
Collaboration with the Parents' Association	52
Activities 2022/2023	
Prevention and Safety activities	53
Sports Week	54
The School Fete	55
Excursions and Camps	56
Class Photos 2022/2023	58
Departure of Cycle 4.2 Pupils	66
Practical Information	
Practical Information	67



Supervision of pupils

At the beginning of the school year, the teachers of years 2 to 4 draw up a supervision schedule. Five teachers supervise the children in the playground, for 10 minutes before the beginning of classes, and for ten minutes after the end of classes. 6 teachers are also present at playtime.

In the 1st year, all of the teachers supervise the pupils in the playground.

Absences, exemptions and compulsory school attendance

Compulsory school attendance

In Luxembourg, school attendance is compulsory between 4 and 16 years of age. All children residing in Luxembourg having reached 4 years of age before 1st September must attend school.

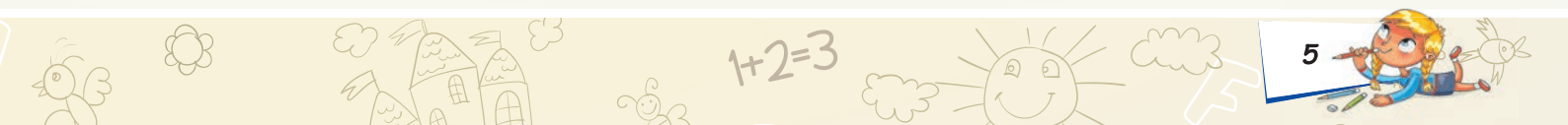
For children not attending primary school in Sandweiler, or enrolled in a private school, **an enrolment certificate must be submitted to the municipal secretariat at the latest eight days after the beginning of the school year.**

Contacting the school

You can contact the school by e-mail at the following address:

schoul@sandweiler.lu

www.sandweiler-schoulen.lu





Good to Know

Absence from class

Notice of all absences must be given to the appropriate teaching staff by the child's legal representative, on the day of absence before 8:15 a.m.

The only legitimate reasons for absence are illness of the child, the death of a close relation or a case of force majeure.

If the pupil is absent for more than three days, a medical certificate is compulsory.

Requests for exemption

Exemptions from attendance may be granted exceptionally for legitimate reasons on request from the parents.

Exemptions may be granted:

- by the permanent class teacher, for periods not exceeding one day.
- by the Chair of the comité d'école (school committee) for periods of two to five consecutive days.

Procedure: All requests for exemption from attendance must be duly justified and contain: the child's name, the permanent class teacher's name, the reason for the request and the date for which exemption is requested.



Dear Madam or Sir.....

I the undersigned..... ask you to please excuse the absence of my child.....

- on (day and date)

- on (day and date)
from to (time)

- on (day and date)
to (day and date)

Reason for absence:.....

Best regards,

Signature:

Notification/explanation of absence (model)



A **signed**, written request shall be sent by the child's parent or guardian within **reasonable time**.

Provisions in case of cancellation of lessons due to bad weather or force majeure

In case of cancellation of lessons parents will be informed by the Ministry by the following means:

- ① through the media (RTL, Eldorado, etc.);
- ② via the Sandweiler municipality's sms2citizen service (for registered parents only).

In case of cancellation of lessons by the Sandweiler Municipality, parents will be informed by the following means:

- ② via the sms2citizen service provided by the Sandweiler municipality (for registered parents only).

General provisions in case of cancellation of lessons:

- ② During school hours, a **reception service** will be provided by the teachers at the school.
- ② A **telephone hotline** will operate on the number 621 50 24 21 (chair of the school committee) between 7:00 and 8:00 a.m. and on the number 35 97 11-1 (municipality) from 8:15 a.m.

Reception at the Maison Relais childcare centre:

- ② There will not be any Pédibus group walking to school.
- ② Reception at the childcare centre will be provided from 7:30 to 8:00 a.m. for enrolled children.

If you have not yet registered for the **sms2citizen** service, you can download the registration form on the school website www.sandweiler-schoulen.lu and send it to the Municipality.

School materials

The pupils' school textbooks are provided free of charge by the municipality of Sandweiler. The rest of the school materials (notebooks, pencils etc.) are provided by the parents.

Swimming lessons

Swimming lessons are organized for pupils in cycles 2 to 4. These lessons take place at the "Coque" in Luxembourg-Kirchberg and are given by the teachers. Lessons for pupils who do not know how to swim in cycles 2, 3 and 4.1 are given by Vicky Komes, a swimming instructress.

Contacting the school

In case of questions concerning teaching or in case of any problems, parents can make an appointment, in the following order:

1. The permanent class teacher/person in charge of lessons
2. The chair of the comité d'école (School Committee)
3. The head of the regional education directorate





Grants and Allowances

The municipality of Sandweiler provides a wide range of grants and allowances for its residents.

The grants for children and pupils are as follows:

Allowances for post-primary studies:

- ▶ **Completion of studies success allowance**
= €75
- ▶ **School year success allowance**
= €75
- ▶ **Higher education grants**
= €250 for the year as whole
(winter and summer semesters)
- ▶ **Grants for pupils attending the Conservatoire of music in Luxembourg**
= 50% of enrolment fees
(singing or instruments) only for courses not provided by the municipality of Sandweiler



Application forms can be downloaded from:

www.sandweiler.lu/
They must be sent to the college of aldermen with all supporting documents.



Terms and conditions for state aid:

<https://www.ugda.lu/fr/ecole-de-musique/enseignement-musical/aide-etatique>



School Calendar 2023/2024

September 2023						
M	D	M	D	F	S	S
				1	2	3
4	5	6	7	8	9	10
11	12	13	14	15	16	17
18	19	20	21	22	23	24
25	26	27	28	29	30	

October 2023						
M	D	M	D	F	S	S
						1
2	3	4	5	6	7	8
9	10	11	12	13	14	15
16	17	18	19	20	21	22
23	24	25	26	27	28	29
30	31					

November 2023						
M	D	M	D	F	S	S
		1	2	3	4	5
6	7	8	9	10	11	12
13	14	15	16	17	18	19
20	21	22	23	24	25	26
27	28	29	30			

The day after First Communion (provided that First Communion is not celebrated on a Saturday), the classes of the pupils concerned will function normally. However, the teachers of these classes will accept any written excuses concerning the pupils' absences during the morning.

Classes of the four cycles of primary education will no longer be suspended on the day of pilgrimage to Notre-Dame Cathedral, Luxembourg. However, the teachers of these classes will accept any written excuses concerning the pupils' absences during the morning.

December 2023						
M	D	M	D	F	S	S
				1	2	3
4	5	6	7	8	9	10
11	12	13	14	15	16	17
18	19	20	21	22	23	24
25	26	27	28	29	30	31

January 2024						
M	D	M	D	F	S	S
1	2	3	4	5	6	7
8	9	10	11	12	13	14
15	16	17	18	19	20	21
22	23	24	25	26	27	28
29	30	31				

February 2024						
M	D	M	D	F	S	S
			1	2	3	4
5	6	7	8	9	10	11
12	13	14	15	16	17	18
19	20	21	22	23	24	25
26	27	28	29			

March 2024						
M	D	M	D	F	S	S
				1	2	3
4	5	6	7	8	9	10
11	12	13	14	15	16	17
18	19	20	21	22	23	24
25	26	27	28	29	30	31

April 2024						
M	D	M	D	F	S	S
1	2	3	4	5	6	7
8	9	10	11	12	13	14
15	16	17	18	19	20	21
22	23	24	25	26	27	28
29	30					

May 2024						
M	D	M	D	F	S	S
		1	2	3	4	5
6	7	8	9	10	11	12
13	14	15	16	17	18	19
20	21	22	23	24	25	26
27	28	29	30	31		

June 2024						
M	D	M	D	F	S	S
					1	2
3	4	5	6	7	8	9
10	11	12	13	14	15	16
17	18	19	20	21	22	23
24	25	26	27	28	29	30

July 2024						
M	D	M	D	F	S	S
1	2	3	4	5	6	7
8	9	10	11	12	13	14
15	16	17	18	19	20	21
22	23	24	25	26	27	28
29	30	31				

■ School holidays
■ Public holidays

**Start of the School Year,
15th September 2023**

After being welcomed by the representatives of the municipality, all children and their parents are asked to go to their classrooms, where their teachers will welcome them. The parents' association invites all parents to go to their stall, where they will be served coffee and croissants provided by the municipality.

Start of the school year

Cycle 1 – early childhood:

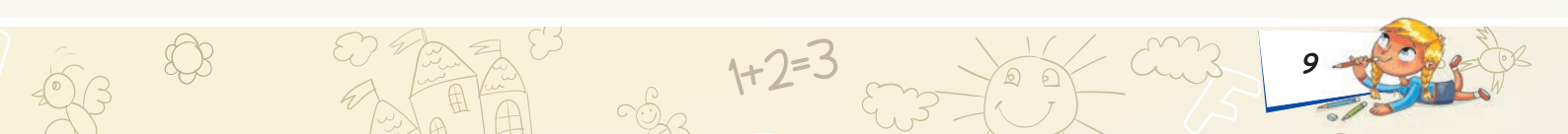
Reception of children and their parents between 8:30 and 9:00 a.m. in the classroom.

Cycle 1 – preschool education:

Reception of children and their parents at 8:30 in the "Haus vun de Kanner" school playground.

Cycles 2.1 to 4.2:

Reception of children and their parents at 8:00 a.m. at the "amphitheatre" in the "Um Weier" school playground



PEDIBUS

Begleeder gesicht



School Transport - Pedibus

In Sandweiler - Pedibus

The Pédibus is a system of walking to school that works on the following principle: a group of children is accompanied by adults on their way to school. Like the traditional bus, the Pedibus picks children up at different locations along a pre-determined route, according to a fixed timetable.

Thanks to use of the Pédibus, the traffic around the schools is reduced, it also decreases pollution and noise pollution.

In addition, walking has a beneficial effect on children's health as well as many other advantages: it promotes socialization, awareness of the dangers of the road and children's independence.

We are aware of the importance of the Pedibus. However, due to a shortage of staff, we have been forced to (temporarily) cancel the Pedibus routes.

We are striving to be able to at least maintain the essential route between the 2 schools for the safety of cycle 1 pupils.

With a view to reactivating at least certain routes, **we are calling for new applicants to reinforce the Pedibus team.**

The manager of the Maison Relais childcare centre and her assistant organize this transport and take care of registration.

The "Pedibus" service has been available in Sandweiler for several years. In concrete terms, this means allowing children to walk to school, supervised by adults (usually parents). Due to the great success of this service, we are looking for new coaches interested in joining the team.

Conditions:

- ▶ be at least 18 years old,
- ▶ speak Luxembourgish.

Do you want to get involved for the 2023/2024 school year? The Pivitsch asbl relay house organizes the Pedibus and manages the registrations.
Such.: 35 97 11-640 / 641
Email: maison.relais@sandweiler.lu



School Shuttle Bus Service

In Findel - School Shuttle Bus Service

A shuttle bus transports pupils of the Sandweiler elementary school between Findel and the school building in Sandweiler. The transport is free of charge and is provided from Monday to Friday, except in school holiday periods.

The following are entitled to use this shuttle service

- ☛ all pupils of cycles 1 to 4 of the Sandweiler elementary school residing in the village of Findel

Parents, grandparents, friends, etc. are not authorized to use the school shuttle service.

An accompanying adult is present in the bus to ensure that the journey is free of any difficulties.

Cycle 1 children coming from Findel are met by the persons in charge of the Pedibus at the "Um Weier building" stop, and accompanied to the new cycle 1 "rue Nic Welter" building. The same applies in reverse order for the return journey.

Registration and Information

Registration, deregistration and requests for information are exclusively dealt with by the Sandweiler municipality's Service Scolaire (school service)

Punctuality and Behaviour

In order to avoid any difficulty and ensure maximum safety for the children, it is essential for the timetable to be strictly adhered to and for children to behave properly during the journey. Please note that in case of repeated failure to comply with these rules, the municipal administration reserves the right to exclude any pupil from the shuttle service.

The Shuttle Bus Timetable

Stop 1
inside the Cité
of the airport

→ **School**
"Um Weier"
Sandweiler

Mon, Wed and Fri
07:40 a.m. / 1:40 p.m.
Tues and Thurs
07:40 a.m.

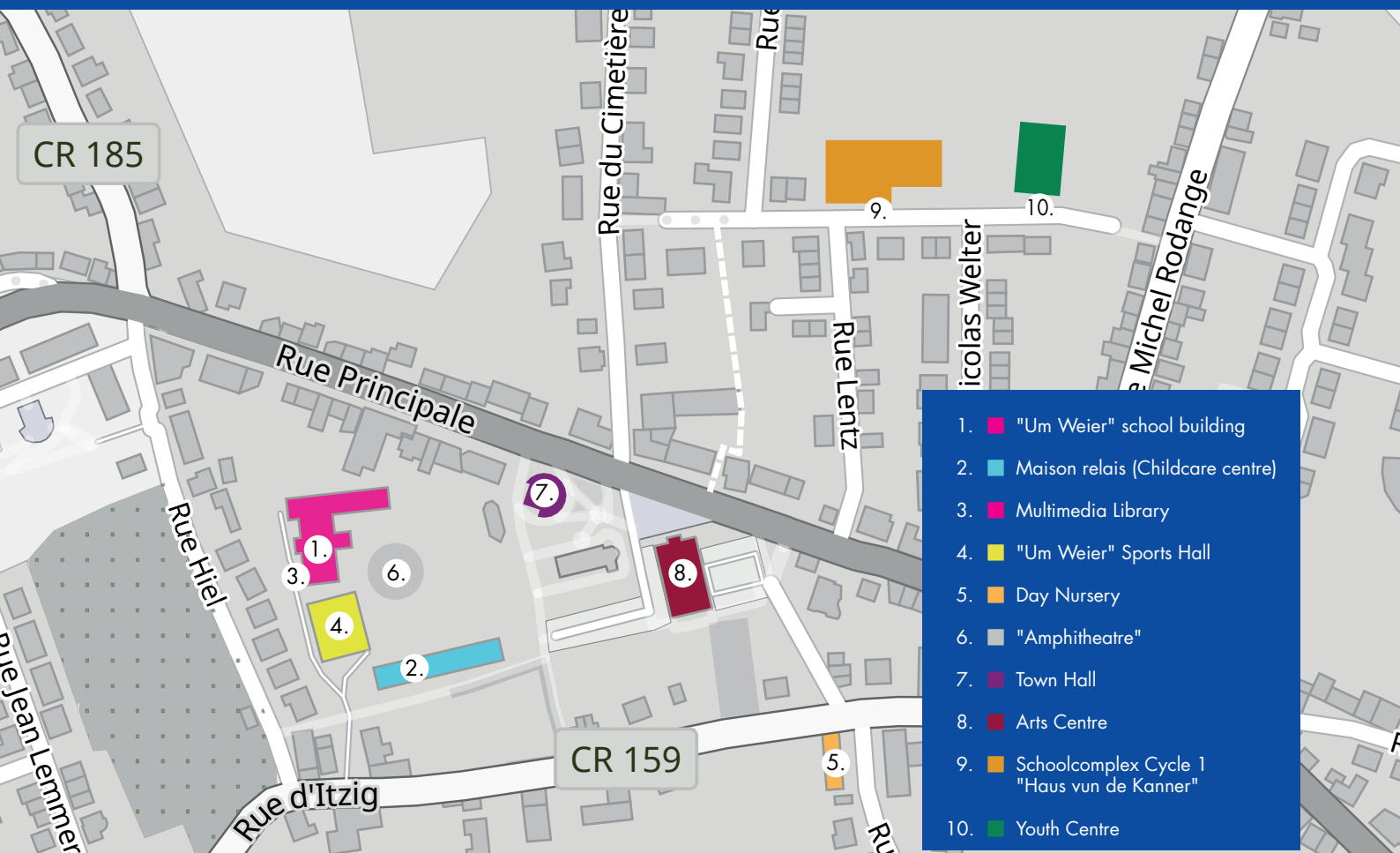
School
"Um Weier"
Sandweiler

→ **Stop 2**
inside the
Cité
of the airport

Mon, Wed and Fri
12:15 p.m. / 4:00 p.m.
Tues and Thurs
12:15 p.m.



Infrastructures de la commune Gemeindeinfrastrukturen



"Um Weier" School building

- 22 rooms
- 1 multimedia library
- 1 professionally-qualified educator
- 22 teachers
- 1 IT room
- 1 reading room

T: 35 97 11 - 1
F: 35 97 11 - 330

6, rue J.B. Weicker
L-5255 Sandweiler



Luc Clercq
Caretaker
T: 35 97 11 - 309





Childcare centre "Um Weier"
 T: 35 97 11 - 640 / 641
 F: 35 97 11 - 660
 6, rue J.B. Weicker
 L-5255 Sandweiler



"Um Weier" Multimedia Library
 T: 35 97 11 - 643
 6, rue J.B. Weicker
 L-5255 Sandweiler



"Um Weier" Sports Hall
 T: 35 94 08
 6, rue J.B. Weicker
 L-5255 Sandweiler

"Haus vun de Kanner" School Building

- 11 rooms
- 1 multimedia library
- 8 teachers
- 3 educators
- 1 educational kitchen
- 1 movement room

T: 35 97 11 - 1
 3, rue Nicolas Welter
 L-5256 Sandweiler



Daniel Viktor
 Caretaker
 T: 621 695 789



School Organization 2023/2024



Cycle 1 Early childhood

Cycle 1 – Early childhood and preschool education

Cycle 1 - early childhood education caters for children between 3 and 4 years of age. In contrast to cycle 1 - preschool education, attendance is not compulsory. It is aimed at the child's overall development, and in particular their language development. For children of foreign origin, getting to know the Luxembourgish language constitutes one of the priorities of early childhood education.

Early childhood education emphasizes children's social and psychomotor development, acquisition of language skills through practice and educational and communicative games.

In **cycle 1 – preschool education**, each class caters for children between 4 and 6 years of age. The activities are varied and fall into the following areas: physical, musical, artistic, mathematical, linguistic and scientific activities.

Address

Haus vun de Kanner - Cycle 1
3, rue Nicolas Welter
L-5256 Sandweiler

Timetable

Mon	Tues	Wed	Thurs	Fri	Sat
Reception at school: 7:30 to 8:15 a.m.					
School: 8:15 a.m. - 12:00 p.m.*					
1:45 a.m. 3:45 a.m.	free	1:45 a.m. 3:45 a.m.	free	1:45 a.m. 3:45 a.m.	free

* Children in early childhood education have to be at school at 8:45 a.m. at the latest.





Cycle 1 early childhood class 1

↻ Anik Muller
Permanent teacher of class 1

↻ Myriam Weyand-Back
Educator of class 1



Cycle 1 early childhood class 2

↻ Claudine Ronkar
Permanent teacher of class 2

↻ Carole Müller
↻ Laura Philippe
Educators of class 2



Permanent teacher of class 1 a

↻ Fabienne Apel



Permanent teacher of class 1 b

↻ Valérie Millim
Cycle coordinator



Permanent teacher of class 1 c

↻ Julie Kox

↻ Li Wenner



Permanent teacher of class 1 d

↻ Jennifer Beissel



↻ Ken Garnie
Support and deputy teaching duties

↻ Li Wenner
Support and deputy teaching duties





Cycle 1

Preschool education



"Haus vun de Kanner"

In cycle 1, the teachers and the staff of the Maison Relais childcare centre work as a team. This enables both actors to use the different "activity rooms" during and outside of lesson times.

Working concept - Haus vun de Kanner (The Children's House)

The educational team has followed extensive training in order to tailor its working methods to children's needs and thus enable each child to achieve the cycle 1 objectives at their own pace.

The capable child

The new concept is based on the principle of the "capable child". All children have the ability to learn at their own pace.

For this, they need an appropriate and stimulating environment. The rooms and equipment placed at their disposal accompany them like a third educationalist, enabling them to engage in the necessary experimentation to develop their skills.

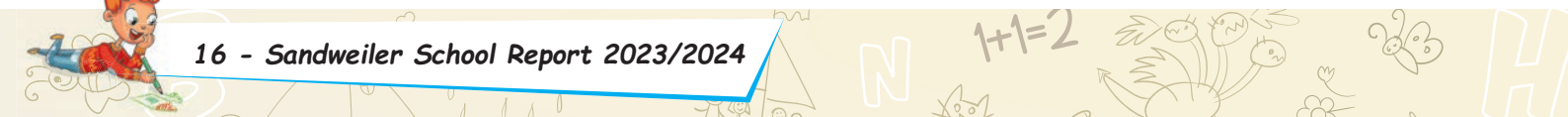
The teachers and educators accompany the children in this process. They observe, assess and place the necessary equipment at their disposal. The different stages and the children's progress are documented.

Address

Haus vun de Kanner - Cycle 1
3, rue Nicolas Welter
L-5256 Sandweiler

Horaires / Uhrzeiten

Mon	Tues	Wed	Thurs	Fri	Sat
Reception at school: 7:30 to 8:15 a.m.					
School: 8:15 a.m. – 12:00 p.m.					
1:45 a.m. 3:45 a.m.	free	1:45 a.m. 3:45 a.m.	free	1:45 a.m. 3:45 a.m.	free



Close collaboration between the childcare centre staff and the cycle 1 teachers

The children meet in the gymnasium for morning reception. In the summer, this reception takes place in the playground.

At noon, the educators take over. At these moments of transition, the teachers and educators are present in the rooms at the same time, which enables them to exchange any information about the children. The educational team meets regularly to exchange information about the children they work with and draw up joint documentation on the children's progress; this enables them to gain an overall view of the child.

The activity rooms

Each activity room deals with a different topic. Children can choose which room they want to go to and thus take part in the activities that interest them. Teachers change rooms according to the type of activity planned for their group. These rooms are used by the pupils during and outside of lesson times.

The Course of a day

In the morning from 8:15 to 12:00 noon

Reception is organized between 7:30 and 8:15 a.m. in the gymnasium. Children in early childhood education have to be at school at 8:45 a.m. at the latest.

Pupils are welcomed by their permanent class teacher at the entrance to the building. After a welcome circle in the class group, the pupils choose among the different workshops provided, in order to go to the corresponding room.

The children are free to choose the time they want to spend in the workshops. If they want to change workshop in the course of the morning, they have to put away the equipment they have used and then inform the teacher in charge before going to another workshop. After playtime, the children take part in class group activities.

At 11:45 a.m. the changeover takes place. Children enrolled at the childcare centre can have lunch or play in the activity rooms, which remain open during the lunch hour. They are accompanied by educators, who make sure that each child has eaten lunch. Children who return home go out with a teacher to wait for their parents in front of the school building.

Monday, Wednesday and Friday afternoons from 1:45 to 3:45 p.m.

The class teachers go to their respective rooms and the children take part in activities organized by the teacher.

At 3:45, children enrolled at the childcare centre are once again taken care of by educators in the activity rooms. The other children remain with a teacher until their parents come to collect them.

Outings to the forest, gymnastic activities in the big sports hall at the "Um Weier" school and a visit to the multimedia library are organized every week.





School Rules at Sandweiler Elementary School Cycle 1 - Haus vun de Kanner

These rules are intended for the pupils, parents and staff of Sandweiler Elementary School in order to create an atmosphere of well-being and mutual respect within our school

1. Pupils, their parents and staff shall comply with the provisions made in the interests of order and safety. They shall show punctuality, respect and good manners. They shall refrain from any behaviour liable to disrupt the proper running of school and extracurricular activities, as well as any act of physical or psychological violence (mobbing).

2. Mutual respect between pupils and all persons involved in school and extracurricular activities is necessary.

3. We move slowly and carefully in the corridors and staircases of the school building.

4. Children leave their personal possessions (toys, books, etc.) at home.

5. We ensure the cleanliness of the toilets and bathrooms.

6. The recording of sounds and images is prohibited on school premises, except for educational purposes. For any other recording, authorization from the teachers and parents concerned is required.

7. Pupils shall always dress in appropriate clothing for the day's activities (gymnastics, outings in the forest, playtime etc.). Each child shall always have suitable kit at their disposal for trips outdoors.

8. We use all school equipment with care.

9. In principle and for reasons of safety, parents do not have access to the school building, except in the case of an appointment with a teacher. Children in early childhood education may be accompanied in the morning between 8:05 and 8:45.

10. If a child is unable to attend lessons, parents shall notify the teacher before 08:00 a.m. on the same day. Justification shall be given for the absence either by means of a medical certificate or by a written excuse sent by the parents to the teacher by e-mail hausvundekanner@sandweiler.lu or via the Dimmi application. For any absence of more than 3 days, the pupil shall produce a medical certificate.

11. During playtime and time under supervision, children shall remain within the playground. Parents collect their children outside the main entrance of the building.

12. It is prohibited for children to use bicycles, scooters, etc. in the school car park. Parents and staff undertake to drive slowly and carefully in the car park.

13. Pupils, parents and staff shall take care not to damage the planted areas and infrastructure of the playground and the school building. Everyone shall respect their own equipment as well as that of their classmates and the school.

14. It is forbidden to throw pieces of ice, stones, bark shavings or any other material.

15. During bus journeys, pupils shall wear their seat belts. They shall remain seated throughout the journey. They shall speak quietly and get on and off the bus carefully. Pupils shall keep their seats clean and not leave any rubbish behind them. Eating or drinking is prohibited throughout the journey.

16. Dogs shall be kept on a lead and owners shall ensure that they remove their waste from the school premises.

17. When leaving the building, children shall say goodbye before going to their parents' home.

18. Pupils, parents and staff are bound to comply with the school rules. Failure to do so may result in consequences



School diary 2023/2024

At the beginning of the new school year, each pupil in cycles 2 to 4 will receive a diary provided by the municipality.





Cycle 2



Organization and Objectives

In cycle 2, emphasis is placed on reading and writing in the German language. German is also the common language of instruction for mathematics and for introductory science.

In mathematics, the children learn to calculate using the numbers from 0 to 100, are introduced to geometry, discover measurements and solve arithmetical problems.

The main subjects are mathematics and German. There are also creative subjects (crafts, drawing and music), sport (gymnastics and swimming), as well as introductory science, Luxembourgish and life and society lessons.

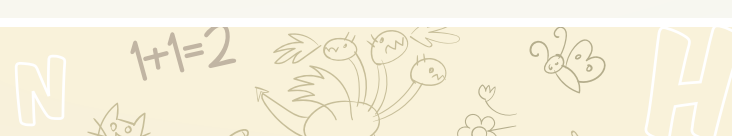
There are regular short oral activities in French.

Address

"Um Weier" school building
6, rue J.B. Weicker
L-5255 Sandweiler

Timetable

Mon	Tues	Wed	Thurs	Fri	Sat
Supervision in the playground: 7:50 to 8:00 a.m.					
School: 8:00 a.m. – 12:10 p.m.					free
2 - 4 p.m.	free	2 - 4 p.m.	free	2 - 4 p.m.	





Permanent teacher of class 2.1 a
T: 35 97 11 - 319

☞ Tanya Friden



Permanent teacher of class 2.1 b
T: 35 97 11 - 314

☞ Nadine Gales
Cycle coordinator



Permanent teacher of class 2.2 a
T: 35 97 11 - 318

☞ Nathalie De Cillia



Permanent teacher of class 2.2 b
T: 35 97 11 - 315

☞ Martine Weniger



☞ Martine Becker-Moecher
Support and deputy teaching duties



☞ Josiane Bellot
Support and deputy teaching duties



☞ Elodie Bulas de Oliveira
Support and deputy teaching duties





Cycle 3



Organization and Objectives

In cycle 3, the teaching is focused on learning French, both oral and written.

In German, the skills acquired in cycle 2 are further developed. Writing and the comprehension of texts are two important components.

In mathematics, the children's mastery of numbers is extended to one million. The problems to solve become more complex.

There are three principal disciplines: German, mathematics and French. The other branches are introductory science, Luxembourgish, drawing, crafts, music, life and society, gymnastics and swimming.

German remains the common language of instruction in mathematics and introductory science.

Address

"Um Weier" school building
6, rue J.B. Weicker
L-5255 Sandweiler

Timetable

Mon	Tues	Wed	Thurs	Fri	Sat
Supervision in the playground: 7:50 to 8:00 a.m.					free
School: 8:00 a.m. – 12:10 p.m.					
2 - 4 p.m.	free	2 - 4 p.m.	free	2 - 4 p.m.	





Permanent teachers of class 3.1 a
T: 35 97 11 - 323
(former class Nadine Gales)

☛ Susana Dinis Martins

Sandy Decker ☛



Permanent teachers of class 3.1 b
T: 35 97 11 - 321
(former class Tanya Friden)

☛ Carole Ressleringer

Paul Frisch ☛



Permanent teachers of class 3.2 a
T: 35 97 11 - 320
T: 35 97 11 - 308
(former class Carole Rosenfeld)

☛ Joëlle Konsbrück-Greter
Cycle coordinator

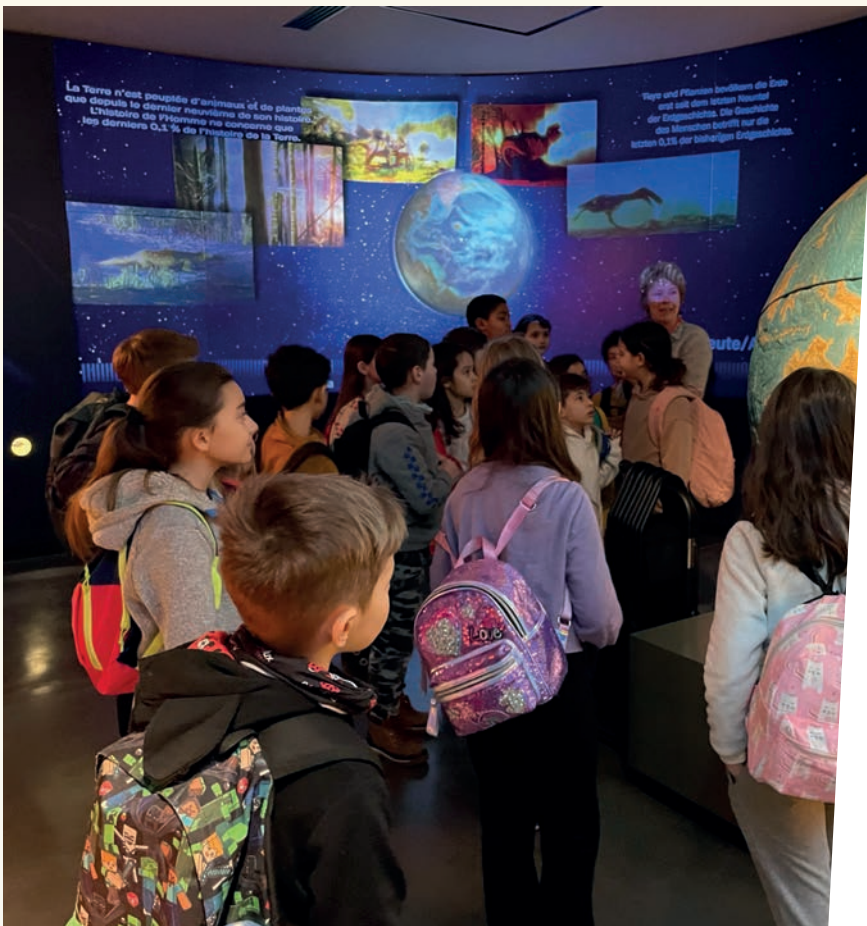
Olivia Kirsch ☛



Permanent teachers of class 3.2 b
T: 35 97 11 - 322

☛ Tanja Kariger

Linda Eischen ☛





Cycle 4

Organization and Objectives

In cycle 4, all of the skills acquired in the three main branches are further developed in order to prepare the children for high school (lycée).

At the end of cycle 4, pupils are capable of analysing complex texts in French and German, and know how to write texts and express themselves orally.

In mathematics, they have mastered the use of numbers beyond one million. Pupils are capable of combining different skills (operations, geometry, quantities, and measurements) in order to solve more complex exercises. Introductory science is replaced by the following three branches: natural sciences, geography and history.

The common language of instruction for lessons in natural sciences, geography, history and mathematics is German.

The other subjects are science, Luxembourgish, crafts, drawing, music, life and society, gymnastics and swimming.

Address

"Um Weier" school building
6, rue J.B. Weicker
L-5255 Sandweiler

Timetable

Mon	Tues	Wed	Thurs	Fri	Sat
Supervision in the playground: 7:50 to 8:00 a.m.					
School: 8:00 a.m. – 12:10 p.m.					free
2 - 4 p.m.	free	2 - 4 p.m.	free	2 - 4 p.m.	



Permanent teachers of class 4.1 a

T: 35 97 11 - 328
(former class Susana Dinis/ Sandy Decker)

☛ Christian Even

Sonja Barthel
Cycle coordinator



Permanent teachers of class 4.1 b

T: 35 97 11 - 327
(former class Joëlle Greter/ Olivia Kirsch)

☛ Sarah Hoffmann

Sonja Barthel
Cycle coordinator



Permanent teachers of class 4.2 a

T: 35 97 11 - 325

☛ Dan Hoffmann

Elodie Bulas de Oliveira

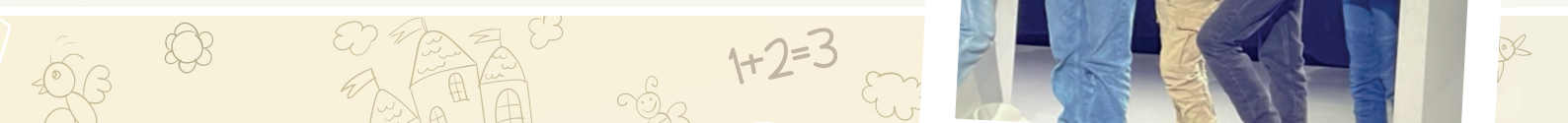


Permanent teachers of class 4.2 b

T: 35 97 11 - 324

☛ Christophe Meerpohl

Elodie Bulas de Oliveira



School Rules at Sandweiler Elementary School

Cycles 2-4

These rules are intended for the pupils, parents and staff of Sandweiler Elementary School in order to create an atmosphere of well-being and mutual respect within our school.

1. Pupils shall comply with the provisions made in the interests of order and safety. They shall show punctuality, respect and good manners. They shall refrain from any behaviour liable to disrupt the proper running of school and extracurricular activities, as well as any act of physical or psychological violence (mobbing).

2. Pupils are bound to comply with the school rules. Failure to do so may result in consequences.

3. Pupils shall obey the school's teaching staff, the staff of the Maison relais childcare centre, the caretaker and any other person involved in school and extracurricular activities.

4. Running, shouting or playing ball games in the corridors and stairways of the school building is prohibited.

5. Mobile phones shall remain in pupils' schoolbags during lesson times and at break times, and shall be switched off. Pupils shall leave all electronic devices and games (Nintendo, I pad, etc.) at home.

6. Pupils ensure the cleanliness of the toilets and bathrooms. It is prohibited to play with water in the bathrooms or with water, soap and towel dispensers. It is prohibited to place large quantities of paper in the toilets.

7. The recording of sounds and images is prohibited on school premises, as well as during lessons on the Teams application programme. Prior authorization from parents and pupils is required for any recording.

8. Pupils shall dress in a proper, decent and neat manner. Special clothing may be prescribed for certain classes, in particular sports education, art education and handcraft sessions.

The wearing of tracksuits (except on sports and swimming days) pullovers that do not cover the navel/stomach is prohibited.

9. In principle and for reasons of safety, parents do not have access to the school building, except in the case of an appointment with a teacher. Children and parents shall remain outside the school building before 8 a.m.

10. If a child is unable to attend lessons, parents shall notify the teacher as quickly as possible. Any unwell pupil who misses lessons for a maximum of 3 consecutive days shall provide justification of their absence, either by means of a medical certificate, or by means of a written excuse sent to the teacher by their parents. For any absence of more than 3 days, the pupil shall produce a medical certificate to justify their absence.

11. It is prohibited to bring matches, lighters, knives or any other dangerous item to school.

12. Possession or consumption of alcohol, cigarettes, drugs or energy drinks is strictly prohibited on school premises. It is also prohibited to bring cans to school.

13. All pupils go outside in the playground during break times, except with special authorization from a teacher.

14. During break times and time under supervision, children shall remain within the playground. The church square, the passage behind the sports hall and the maison relais childcare centre, are not part of the playground.

15. Cycling, skateboarding and scootering are prohibited in the playground during lesson times and time under supervision, that is to say for 10 minutes before and 10 minutes after lessons and during break times.

16. Each class in turn can play football in the mini-stadium during break time, using a hard ball. It is permitted to play with a hard ball at the bottom in the playground. Outside of this area, only soft balls are authorized.

17. Pupils dispose of their rubbish in the bins provided for this purpose in the playground and the school building. Paper, plastic bottles and Tetrapak packaging are disposed of in special bins for recycling.

18. Pupils shall take care not to damage the planted areas and infrastructure of the playground and the school building. Everyone shall respect their own equipment as well as that of their classmates.

19. As far as the slide is concerned, pupils shall comply with the supervisors' safety instructions. It is forbidden to jump on the slide or to obstruct other people on it. Use of the slide is prohibited in the event of rain. Supervisors may put a stop sign in front of the slide, which prohibits children from sliding. In case of snow, use of the slide is only authorized for pupils wearing ski trousers.

20. It is forbidden to throw pieces of ice, stones, bark shavings or any other material.

21. During bus journeys, pupils shall wear their seat belts. They shall remain seated throughout the journey. It is forbidden to shout on the bus or to push other pupils when getting off. Pupils shall keep their seats clean and not leave any rubbish behind them. Eating and drinking are prohibited during bus journeys.

22. Dogs must be kept on a lead and their waste must be removed from the school premises.

23. Smoking is prohibited on the school premises.





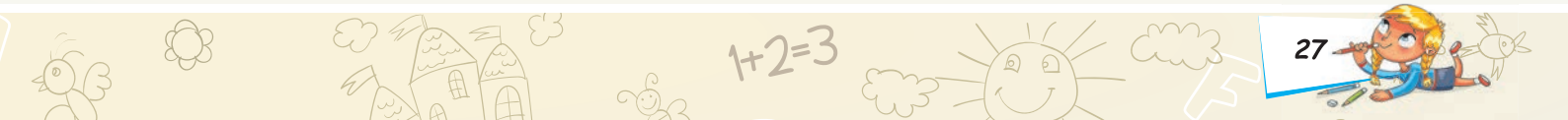
Sandweiler school playgrounds

Play areas in school grounds are reserved for pupils during school hours and are not open to the public. Access to these play areas is controlled for reasons of safety and liability.

During school hours, only pupils and staff of the institution are authorized to use the play areas. This makes it possible to supervise activities and guarantee the children's safety.

Access to the play area may be restricted by a fence or enclosure, which is in general closed during school hours.

It is important to comply with these rules and not to use school play areas during school hours if you are not a pupil or an authorized member of staff. The schools take the safety of their pupils very seriously, and unauthorized use of play areas can lead to safety problems and legal liabilities.





"Léierstiffchen" is an educational project aimed at supporting pupils and teachers in order to enable all pupils in our school to participate as full members in lessons and make personal progress. Personal well-being and self-esteem are paramount.

Pupils who have more difficulty in achieving the study plan objectives are provided with support individually or in small groups. To this end, the Léierstiffchen team first assesses their learning level. They then work with appropriate materials, in short stages, using all their senses in order to achieve the established objectives. The priorities, objectives and measures are set by the educational team for a defined period and are regularly assessed and adjusted.

Every 2 weeks, pupils who are good at mathematics take part in a "Léierstiffchen"-style mathematics lesson in small groups. This lesson is aimed at recognizing problems, analysing them logically and finding solutions.



Léierstiffchen Team



Claudine Thiry

Claudine Thiry is a primary school teacher and has been a member of the "Léierstiffchen" team for 5 years. She is principally responsible for support lessons for pupils of the 2nd and 3rd cycles. She also organizes lessons in mathematical challenges, a field in which she is particularly interested. She has represented

Luxembourg at numerous world championships in Sudoku and logical puzzles.



Danièle Konsbruck

Danièle Konsbruck has worked at Sandweiler primary school for 30 years; initially as a teacher of cycles 2 to 4, then as head of the integration class and—for the last 7 years—as a specialized teacher for children

with specific needs (I-EBS*). Within the "Léierstiffchen" team, Danièle Konsbruck

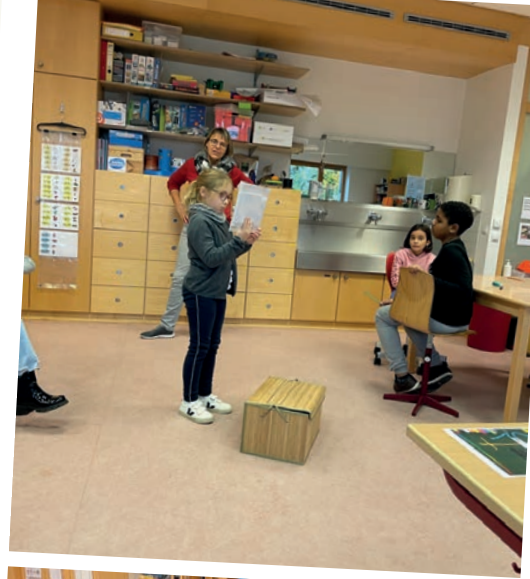
is in charge of support lessons for pupils in all cycles. In the interests of pupils' personal well-being, she also takes care of a certain number of the school's social projects. Having followed numerous professional in-service training courses, she is able to provide support for pupils and teachers. She also collaborates with the educationalists and psychologists of the ESEB (Children with special or specific educational needs' support team)** as well as with the competence centres.

Simone Barthel



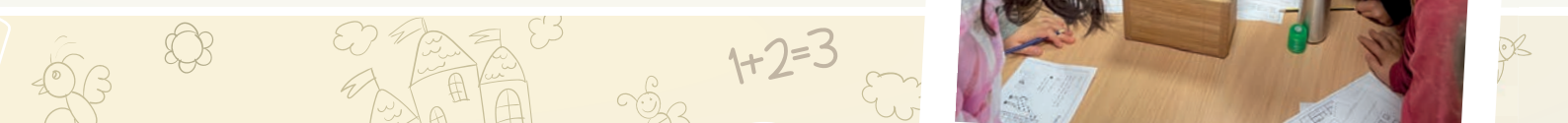
Simone Barthel has worked as a professionally qualified educator (Educator graduée) for the Remich Directorate's ESEB (Children with special or specific educational needs' support team) in different schools in the region for 8 years. For the past 6 years, she has supported pupils with specific needs at Sandweiler in close collaboration with the teachers, the

"Léierstiffchen" team and the Remich "ESEB" assessment team. She has been a member of the "Léierstiffchen" team since September 2021. In addition to support lessons, she also takes care of social projects at Sandweiler School.



* Teacher specializing in the education of children with special or specific educational needs

** Children with special or specific educational needs' support team (ESEB, Equipe de soutien des élèves à besoins éducatifs particuliers spécifiques)



General Information

School Commission

The school commission (commission scolaire) is composed of: 4 representatives of the municipality, 2 parents' representatives and 2 representatives of the teaching staff.

The school commission's tasks are as follows:

- ① coordinating proposals concerning the organization of schools and the school development plan (plan de développement scolaire) and issuing opinions for the local council
- ① monitoring the implementation of school organization and school development plans
- ① promoting extracurricular management measures
- ① issuing opinions on school budget proposals
- ① taking part in the development (construction, alteration etc.) of school buildings

Parents Representatives

The parent representatives are elected by the Parents' Assembly for a period of 3 years.

The parent representatives' tasks

- ① discussing, completing and developing school organization proposals and school development plans drawn up by the school committee (comité d'école)
- ① organizing joint meetings and events with the school's partners
- ① making proposals on all questions related to the organization of school life

Parents Representatives

Véronique Bosco, Daniel Ciccarelli, Romain Dattée, Sylvie Denayer, Julie Durand, Anke Geppert-Luciani, Jean Lemmer, Laetitia Miltgen

E-mail address: e.v.sandweiler@gmail.com

School Committee

The School Committee (Comité d'école) is elected for a 5-year period by the members of the school's teaching staff and is composed of teachers from the school.

Members of the Sandweiler School Committee from 2019 to 2024:

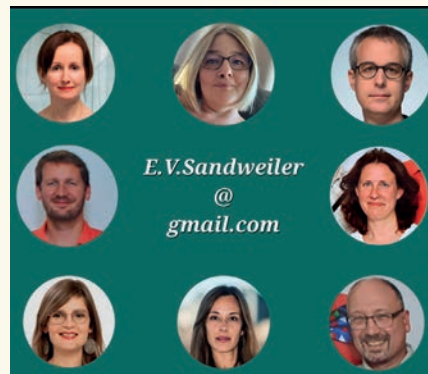
Susana Dinis Martins (Chair)
Tel.: 621,502,421
Email: susana.dinis@education.lu

Sandy Decker, Christian Even, Martine Weniger

Education Department (Service de l'enseignement)

The role of the municipality's education department is the management of different administrative tasks concerning Sandweiler Elementary School.

Sonja Lang T: 35 97 11 - 205
E: sonja.lang@sandweiler.lu





Sandy Decker, Susana Dinis, Martine Weniger, Christian Even

Susana Dinis Martins (Chair)
T: 621 502 421
E: susana.dinis@education.lu

The School Committee's tasks:

- developing school organization proposals
- drafting school development plans (Plan de développement scolaire, PDS) and participating in the assessment thereof
- drawing up proposals on the allocation of the budget
- giving its opinion on any question relating to the school
- determining staff in-service training needs
- organizing the management of teaching and IT equipment
- approving the use of teaching materials

Tasks of the Chair of the School Committee:

- chairing, preparing and coordinating the School Committee's work
- ensuring proper running of the school, together with the director
- organizing and coordinating the educational teams' work
- organizing relations with:
 - the municipal and national authorities
 - pupils' parents
 - the childcare centre and the school health and social welfare team
- welcoming supply teaching staff and organizing the schooling of new pupils
- coordinating teachers' timetables
- collecting data concerning pupils
- informing the mayor of any absence of pupils without valid reason
- granting exemptions from school attendance of more than one day





Joëlle Konsbrück-Greter, Sonja Barthel, Valérie Millim, Nadine Gales

Cycle Coordinators

Tasks of the cycle coordinators:

- convening meetings of the educational team
- setting the agenda, leading meetings and documenting decisions taken
- organizing coordination and communication within the cycle
- representing the cycle team in relation to:
 - the School Committee
 - parents
 - the childcare centre staff

School Health Service

In the course of your child's education, their health is monitored by the school health service team from the Health and Social Welfare League (Ligue médico-sociale). The examinations are compulsory and free of charge. They are conducted for pupils in cycles 1.1, 1.2, 2.2, 3.2, and 4.2:

- measurement of weight and height
- routine analysis of urine
- routine examination of visual acuity
- monitoring of vaccination card
- hearing test
- health check-up by the school doctor
- social welfare assessment

The school doctor does not provide any medical treatment. In case of observations requiring further medical advice, an explanatory letter is sent to the parents with a recommendation to consult their family doctor.

The findings are recorded in a medical record and managed in complete confidentiality. This record will be handed over to you on request at the end of your child's schooling.

The school health and social welfare team is at your disposal for any questions concerning your child's health and their integration into school and society

Cycle coordinators 2023/2024:

Cycle 1: Valérie Millim
 Cycle 2: Nadine Gales
 Cycle 3: Joëlle Greter-Konsbrück
 Cycle 4: Sonja Barthel

Dr Raoul Warken
 (School doctor)

2, rue de Moufort
 L-5310 Contern

T: 26 78 57 55
 E: cabinetwarken78@gmail.com



Diane Urwald
 Qualified paediatric nurse (Infirmière graduée)
 / Service Médico-social (Health and Social Welfare service)

20, route du vin
 L-6794 Grevenmacher

T: 75 82 81 - 1
 E: diane.urwald@ligue.lu



The Regional Directorates

In Luxembourg, there are fifteen regional directorates. Sandweiler school belongs to the Remich directorate. The latter is managed by a director and two deputy directors.

The directorates are responsible for:

- ① administrative management and pedagogical supervision of the schools
- ② consultation with and support of professionals
- ③ professional integration of young teachers and educators
- ④ management of relations between teaching staff within schools and relations with parents.

The directors work in close collaboration with the Chairs of School Committees. They are also in charge of catering for children with specific needs.

Mr Marco Suman, head of primary education

Ms Jessica Casanova, deputy head of primary education

Ms Josiane Schons, deputy head of primary education

Address of the Secretariat:
Direction de région - Remich 3, Konzerwee
L-5444 Schengen

secretariat.remich@men.lu
T: 24 75 59 10
F: 24 75 59 11

The Education System in Luxembourg

Reception of newly-arrived children

Children from 3 to 11 years of age

Children are enrolled in elementary school via the education department of the municipality of residence.

Children of 12 years of age and over

Recently arrived youngsters aged 12 or more are enrolled at school and guided in their choices by a specific reception unit (Cellule d'accueil scolaire pour élèves nouveaux arrivants - CASNA). In order to ascertain the suitable class and level of competences of each child, the CASNA assesses his/her school achievements and knowledge of languages.

Enrolment in municipal primary education

Public elementary schools cater for children from 3 to 11 years of age. All children living in Luxembourg having reached 4 years of age before 1 September must attend elementary school. Children having reached three years of age before 1 September may attend an early childhood education class, if their parents so wish.

Parents will receive an application form from the municipal administration for eventual enrolment in early childhood and preschool education.

The municipality automatically enrolls the child in the school corresponding to their place of residence (cycle 2 - 4).

Parents arriving in the municipality in the course of the year should contact the municipal administration's school service directly.

Administration communale de Sandweiler
Service scolaire (Sandweiler municipal
administration school service)

18, rue Principale
L-5240 Sandweiler
T: 35 97 11 - 205
E: sonja.lang@sandweiler.lu

Cellule d'accueil scolaire pour élèves
nouveaux arrivants
(New arrivals school reception unit)

29, rue Aldringen
L-1118 Luxembourg
T: 24 77 65 70
E: secretariat.secam@men.lu





Primary Education

Mode of operation

Primary education is organized in four learning cycles. Cycle 1 corresponds to preschool education and generally covers three years. The first year (early childhood education) is optional.

Cycles 2 to 4 correspond to primary education.

In each cycle, your child is enrolled in a class. Each class is accompanied by one or two permanent teachers throughout the cycle (2 years).

Competence-based teaching

In elementary school, teaching is based upon competences. A competence is a child's ability to use their knowledge to accomplish a task or solve a problem.

Children need to be able to mobilize their knowledge in concrete and new situations, both in school and in life. However, it is important to understand that there can be no know-how without knowledge, hence the importance of homework and repetition.

Throughout the year, teachers try to develop the pupils' required competences. Let us note that integration weeks, conferences, workshops in the multimedia library, internet research, educational visits and outings, constitute special moments when different areas of competence combine to create a particularly favourable learning environment.

Assessment at Elementary School

Teachers assess pupils on a regular basis. Various different methods are used: tests, assessment of work, observations, in-class assignments, etc.

Three times a year, at the end of each term, parents are informed of their child's progress at a personal interview with the teacher.

This information is provided with the assistance of two different tools:

- intermediate assessment
- end of cycle assessment



Rue J.B. Weicker

Dear parents,

This no stopping and no parking sign is located at the entrance to "rue J.B. Weicker" and constitutes a constant visual reminder of your responsibility as adults.

By complying with this prohibition of stopping and parking, you also help traffic flow and avoid dangerous situations. Parents and drivers need to be patient and find safe alternatives for dropping off and picking up their children, such as nearby car parks. Ultimately, compliance with the no-parking sign proves your commitment to your children's safety. It is a simple act which helps to create a calm and harmonious educational environment.

Moreover, access needs to remain accessible in order to avoid obstruction of the emergency services and guarantee safety for their action.



iPads at School

Sandweiler School has a set of 16 iPads for classes. Each teacher also has an iPad in their classroom, which can be used in a targeted manner. Children are able use this tool for completing exercises and for language learning through fun games. Our iPads have a large number of applications specially designed for use in the classroom.

Many pupils are also learning programming with the help of iPads. A special programme enables them to define commands and thus move a robot around a grid.



$$1+2=3$$

Special features at the Sandweiler School



Social Projects at Sandweiler

SaKaRo: Sandweiler Children's Council

The SaKaRo (Sandweiler Kannerrot) is the council of children of cycles 2 to 4. Representatives from the different classes take part in SaKaRo meetings. They try to find solutions to problems of school life and organize events. Participation in SaKaRo meetings promotes the development of democratic spirit and contributes to enhancing the school environment by involving pupils in the decisions of school life.

Once a year, a SaKaRo meeting is held at the town hall in the presence of the mayor.

Activities organized by the Sakaro:

- ▶ Organization of a party in the municipality for the other classes
- ▶ Installation of a friendship bench in the playground in September 2023
- ▶ Organization of cleaning of the playground by the pupils
- ▶ Letter of thanks for the Mayor Simone Massard

Social Lessons in Cycles 2 - 4

The aim of social lessons is to prevent conflict and provide children with the means of dealing with it in a positive manner.

During social lessons, children learn that conflict as such is neutral. Children also reflect on how they react at times of conflict. They become aware of their own feelings and those of their fellow students. Another important aspect is learning to formulate problems by means of objective assertions, and to refrain from making judgements and premature interpretations.



"Stiffchen": a space for children to speak

In order to listen to children with personal problems, Danièle Roos-Konsbruck has set up a space for speaking called "Stiffchen".

In individual interviews, problems are defined and each individual's feelings, needs and expectations are identified. Discussions then focus on possible solutions.

Following this initial discussion, and with the children's agreement, there are often further discussions with other children involved, with the teachers concerned and sometimes with parents.

Generally speaking, the simple fact of talking to somebody who listens attentively to them in a non-judgemental manner, is helpful for children in itself.





"Pausengel" Project

A "Pausengel" is a pupil, trained by the school, whose task is to help fellow pupils in resolving small everyday problems and to assist them in dealing with conflicts at playtime. Cycle 4.1 pupils who wish to take part in the project do so as volunteers. They receive 9 hours of training with the teachers.





Mission accomplished

Dear readers,

Once again this year, I filled a large number of children with enthusiasm for the French language and respectful treatment of us dogs. As the children already knew the rules for the school dog, we were able to start our project straight away.

In general, the pupils came to see me on Fridays in small groups. My mistress (Joffer Joëlle) organized exercises and games based on French verbs, vocabulary and grammar. On one occasion, the children also brought blankets and cushions and we listened to a story together about pets from space.

During the second term, we studied comics in which dogs (very often) play an important role. Using Boule et Bill (Billy and Buddy) comic books, the children learned to invent new speech bubbles to tell and write the story in French. There was always something for the children and I to do. I particularly remember a trail that the children had set up for me. I also found the trip to the Kalendula garden very exciting.

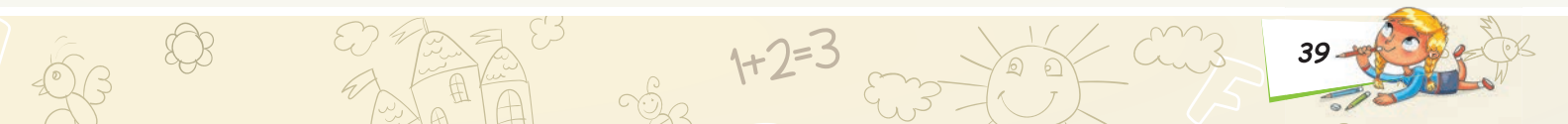
In the third term, the subject of communication between man and dog was uppermost. Every child now knows that rather than using human language, dogs express themselves through body language.

At the time of the mini-dogs' school session, pupils proved that they knew how to guide me properly using signals (a word + a movement): Sit, bleif, kuck a géi, weider, etc.

In order obtain a certificate, knowledge about me and my fellow dogs was tested in a quiz about dogs. This was the end of our project.

Dear children, I was very happy to work with you, it was simply wonderful. I will certainly miss you all. But I am sure that more kind children will come to see me next year.

Your Annabelle



The School Development Plan (SDP)

The SDP (Plan de développement scolaire, PDS) is aimed at meeting the school's specificities and needs.

The teachers at Sandweiler School have decided to focus on reading in their SDP. The plan will be current until July 2024.

Objective no. 1:

We encourage a taste for reading in our pupils from an early age and pass on the pleasure of reading.

Possible activities:

- reading to other classes
- presentation of books and reading aloud by the teacher
- establishing a "multimedia library permit" in order to learn the multimedia library rules
- reading by an author

Objective no. 2:

We create a climate of trust and well-being for children to ensure that they become full citizens of the school who are able to give their opinions, take part in decisions, become responsible and feel that they are listened to.

Activities:

- Sakaro
- class meeting
- Pausenengel
- "Stiffchen" discussion space
- social lessons
- godfather/godmother project

Objective no. 3:

At the "Léierstiffchen" children take part in activities adapted to their needs.

The activities are decided upon by the educational team, in consultation with the I-EBS (specialized teacher for children with specific needs) and the head of the "Léierstiffchen" for a limited period.

Objective no. 4:

The cycle 1 educational team works according to the concept put in place at the time of a specific training session, which includes the participation of the cycle 1 teachers and the childcare centre staff.





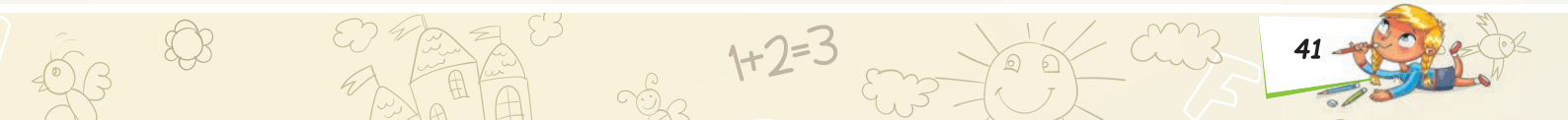
Extracurricular supervision plan - ESP

The ESP (Plan d'encadrement périscolaire, PSP) is aimed at reinforcing dialogue and collaboration between the school and the childcare centre, in order to achieve coherent instruction and supervision for children throughout the day.

The ESP thus makes an inventory of the whole of the activities provided to children in the municipality, in particular:

- access to documentary sources
- cultural and sports activities
- leisure and recreational activities
- supervised study and help with homework
- lunchtime meals
- before and after school reception

The ESP of the municipality of Sandweiler is published on the website:
www.sandweiler-schoulen.lu





ABC **School Multimedia Library** N

5+5=10

- around 20,000 titles in 12 different languages
- Persons in charge of cycles 2 to 4: Linda Eischen, Joëlle Konsbrück
- Persons in charge of cycle 1: Fabienne Appel, Ken Garnie, Jennifer Beissel
- Once a week, children can go to the multimedia library with their class.
- Children are able to borrow two books and a DVD or CD for a maximum of two weeks

The multimedia library is a quiet place where certain children like to come to read quietly or listen to stories.

The people in charge listen to the children, advise them on which books to borrow and buy the latest books published on the market so that each child can find reading material to suit their tastes.





Focus on Reading

Reading is very important for our pupils, and a real passion for some of them. For this reason acquiring new books is a priority for the multimedia library team. The number of books in the multimedia library is therefore constantly increasing.

Thanks to our school development plan, teachers place emphasis on reading and organize a large number of activities concerning this issue. Cycle 3 pupils thus took part in a reading competition. The children who read the most books and answered a questionnaire on the Internet won a prize.

Children often read books out loud and teachers are in the habit of reading to the children. Many books are presented in class in order to introduce pupils to other styles of reading.

Authors are regularly invited in order to present their books to the children. Each time they manage to fill the pupils with enthusiasm and fascinate them with new reading.

To ensure that the children have a quiet place to read and are thus able to escape into their reading, a "Liesstiffchen" has been set up. In this room, subdued lighting, as well as sofas and cushions encourage the children to settle down comfortably to read in silence.



Childcare centre Maison Relais

Sandweiler Childcare Centre (Maison Relais) provides full-time supervision, outside school hours, throughout the year, for children from 3 to 12 years of age, attending Sandweiler elementary school.

Services provided:

School meals:

The centre serves fresh, well-balanced meals. In both school buildings, they are prepared on site by two cooks and an assistant cook in a professional kitchen. The meals are presented in the form of a self-service buffet. Two main courses (vegetarian and non-vegetarian), vegetables, salads and desserts are at the children's disposal. They are able to choose what they want to eat. We accept that children do not like certain foods, or that they may not be very hungry, enabling them to follow their own rhythm.

Extracurricular supervision during school periods (until 6:30 p.m.):

The childcare centre has operated according to the "world workshops" principle since 2016. For this reason, the premises of the childcare centre have been reorganized into workshops and dining rooms. Most of the workshops are open every day, and some on alternate days.

The workshops provided cover the fields of activity of the national reference framework for non-formal education, which are:

- ① Emotions and social relations
- ② Values, participation and democracy
- ③ Language, communication and media
- ④ Creativity, art and aesthetics
- ⑤ Movement, bodily awareness and health
- ⑥ Science and technology

Children are able to choose which workshop they want to take part in and when they want to have lunch.

Supervision of children during the school holidays

During the school holidays, the childcare centre is open from 7:30 a.m. to 6:30 p.m. Activities are provided in the different workshops. At the beginning of each school year, parents are informed of the days on which the childcare centre is closed.

Homework supervision

The childcare centre provides pupils with the opportunity to do their homework. Supervision is organized. However, the educational staff do not correct homework.

For further information on the free provision of childcare centre services, please visit the www.staarkanner.lu website.

Enrolment

Enrolments for the "Haus vun de Kanner" (Early Childhood and Preschool education) school building are open every year between 1 and 31 March. Enrolments for the childcare centre for cycles 2 to 4 are open between 15 May and 15 June. During this period, please make an appointment with the director or deputy director. (Documents required: copy of vaccination card, parents' employment certificates).

The enrolment forms are completed with the parents at the appointment. They are not sent to parents in advance, neither are they placed on the website.

Parents receive a definitive answer by post, at the latest by 1 August. Any children enrolled after 31 March or 15 June respectively are automatically placed on a waiting list.

From September 2023, all of the information, registration and activity plans for the school holidays can be found on the Maison Relais website www.maisonrelais.sandweiler.lu



Maison relais Sandweiler (cycle 1)
 3, rue Nicolas Welter
 L-5256 Sandweiler
 T: 35 97 11 402 / 403

T: 35 97 11 415
 T: 621 311 383
 E: hausvundekanner@sandweiler.lu
 E: educateurshvdk@sandweiler.lu



Rachel Manderscheid
 director, professionally-qualified educator (Educator graduée)
 T: 35 97 11 403
 rachel.manderscheid@sandweiler.lu



Lidija Djurdjevic (early childhood & preschool education) deputy director, professionally-qualified educator (Educator graduée)
 T: 35 97 11 402
 lidija.djurdjevic@sandweiler.lu

Maison Relais - Early Childhood and Preschool education



Anna Boesen
 Educator



Sarah Morisse
 Educator



André Dias Lérias
 Educator



Filipa Lopes Neves
 Educator



Mirella Laera
 Assistant educator



Corinne Burnet
 Assistant educator, assistant chef
 T: 35 97 11 405



Zeneide Rodrigues
 Aide-Educator



Sandra Spanier
 Life assistant



Michaela Eck
 Chef
 T: 35 97 11 405



T: 35 97 11 642
E: maisonrelais@sandweiler.lu



Rachel Manderscheid
director, professionally-qualified educator (éducatrice graduée)
T: 35 97 11 640
rachel.manderscheid@sandweiler.lu



Stefanie (Steffi) Fritz (Cycle 2-4)
deputy director, educator
T: 35 97 11 641
stefanie.fritz@sandweiler.lu



Maison Relais - Cycle 2-4



Valdemir (Valdy) Coelho Gomes
Educator
T: 35 97 11 650



Jo De Oliveira
Educator
T: 35 97 11 657



Lisa Urbany
Educator
T: 35 97 11 651



Annette Schockmel
Social and family assistant
T: 35 97 11 654



Ivana Gligorijev
Assistant educator
T: 35 97 11 642



Sandra Britten
Assistant educator
T: 35 97 11 642



Jeff Siebenaler
Assistant educator
T: 35 97 11 642



Joëlle Thurmes
Assistant educator
T: 35 97 11 642



Jana Ewen
Assistant educator
T: 35 97 11 642



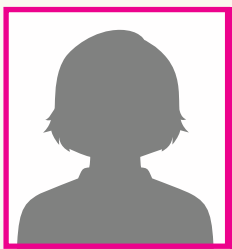
Celine Vermeulen
Assistant educator
T: 35 97 11 642



Dany Faria Loureiro
Trainee educator
T: 35 97 11 642



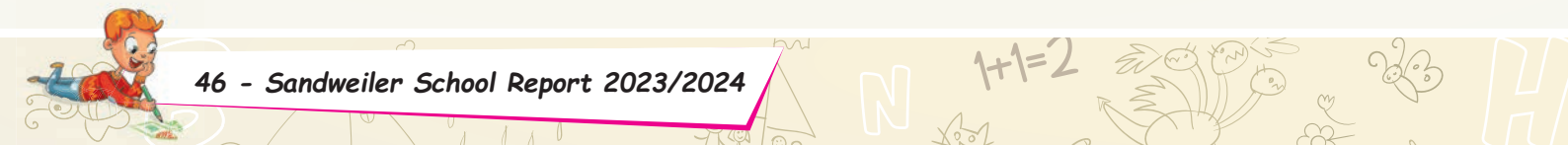
Martine Esch
Assistant educator
T: 35 97 11 642



Jessica Tavares
Assistant educator
T: 35 97 11 642



Eric Zielonkowski
Chef Cycle 2 - 4
T: 35 97 11 645



Crèche Piwitsch Kindertagesstätte Piwitsch



Opening times

Monday to Friday from 7:00 a.m. to 6:30 p.m., except on public holidays.

Admission

Children from 3 months to 4 years of age are admitted to the "Piwitsch" day nursery.

Enrolment possibilities

- Full-time enrolment (minimum 8 hours)
- Part-time enrolment (minimum 6 hours)
- Morning enrolment with collection before 12:00 p.m.
- Morning enrolment with collection at 12:30 p.m.
- Afternoon enrolment with collection between 2:00 and 3:00 p.m.

Priority is given to

- ① single-parent families
- ① families with both parents professionally occupied
- ① children from a sibling group
- ① when the child is the beneficiary of an inclusion measure
- ① 70% for residents of the municipality of Sandweiler
- ① parents employed within the municipality of Sandweiler
- ① disadvantaged families

Important information

Families in which one parent is on full-time parental leave are not entitled to full-time places.

Extracurricular supervision by Piwitsch non-profit organization (a.s.b.l.)

Piwitsch a.s.b.l. runs the day nursery and the childcare centre in Sandweiler with more than 44 employees. Children are looked after in the day nursery from 3 months of age, with the childcare centre subsequently taking over.



Piwitsch Day Nursery

2, rue de Contern T: 35 69 49 - 41
L-5215 Sandweiler F: 35 69 49 - 36

Visit our website:

creche.sandweiler.lu
E: creche@sandweiler.lu



Manon Lamy
Director



Line Fantin-Halsdorf
Deputy Director

The board of Piwitsch a.s.b.l. is composed of:

Chair: Pascale Dumong-Berg
Vice-chair: Simone Massard-Stitz
Secretary: Martine Obertin
Treasurer: Roger Meysembourg

Members: Carole Kraus,
Carole Stammel-Leyder,
Martine Jacoby





The Maison des Jeunes (Youth Centre) opened its doors in 2009. The building is a former fire station which is bathed in natural light thanks to its high ceilings. The interior is striking and welcoming, thanks to a number of artistic projects. Our youth centre has board games, a billiard table, table football and informative material on a range of subjects. We work according to the principle of free choice and participation, whereby young people are free to decide what they want to do without the influence of educators.

Activities focus on young people's wishes, desires and needs. According to the Ministry of Education, the main foundations of youth work in an open environment are: information, organization and education. The role of a youth centre is to support young adolescents in the different stages of their development, encourage their autonomy in order to integrate them into society and provide support for their adult life. Work with young people consists in continuous exchange between the educational team and the community. The multidisciplinary team is made up of two qualified educators (éducateurs diplômés) and a graduate educator (éducatrice graduée).

Our opening times are as follows:

- Sunday/Monday: closed
- Tuesday/Thursday: 2:00 - 8:00 p.m.
- Wednesday: 4:00 - 8:00 p.m.
- Friday: 4:00 - 10:00 p.m.
- Saturday: 2:00 - 7:00 p.m.

We usually cater for young people from 12 and 26 years of age. Thanks to our collaboration with the Maison Relais, we are now able to cater for young people from 11 years of age. *11 Jahren aufzunehmen.*



For the year 2023, we developed two educational projects:

1. Let's Talk about ...

The educational team has observed that there is a high level of demand from young people to talk about subjects relating to sexuality. The project will run until December, since we plan one activity per month. The activities are selected by the educators according to the issues they wish to address or if we observe a situation of conflict with regard to this subject. We aim to create a climate in which nobody feels excluded or judged for their thoughts, feelings, sexual orientation, affection, etc. Moreover, we work with external partners who help us to address sensitive issues in the best possible manner. We have already completed a number of activities, for example: the addition of "non-binary" attendance registers, a workshop with CIGALE, Bee Secure, the introduction of gender-neutral bathrooms and a questions box in order to ask questions in an anonymous manner.

2. NOVINE

NOVINE is a magazine written by young people. It gives them the opportunity to express themselves freely and to put themselves in an editor's shoes. Young people are free to choose the issues that they want to tackle and are able to write what they consider to be important. We aim to provide them with the opportunity to express themselves and communicate with the local population thanks to the magazine. In addition, it represents our work as a youth centre. The first magazine is already ready and can be obtained from the municipal administration or at the youth centre. The second magazine will be published at the end of the year.





LASEP - Ligue des Associations Sportives de l'Enseignement Primaire

The aim of the LASEP (Ligue des Associations Sportives de l'Enseignement Primaire) is to promote favourable attitudes towards physical exercise among elementary school pupils. The LASEP thus provides weekly sports lessons to children in their municipality outside of school hours. Sports events organized at the national level, in which the Sandweiler LASEP groups participated in 2022/2023:

- Butzendorf at the Coque
- Fun athletics at the Coque
- National cross country running at Diekirch
- Cycling day in Cessange
- Football festival in Cessange
- Olympics with Sporty at the Coque

LASEP timetable ("Um Weier" Sports Hall)

Cycle 1: Tuesday from 1:30 to 2:30 p.m. Cycle 2: Thursday from 1:30 to 2:30 p.m.
Cycle 3: Friday from 4 to 5 p.m. Cycle 4: Wednesday from 4 to 5 p.m.

Start of Cycles 2 to 4 ➤ week beginning 25 september 2023

Start of Cycle 1 ➤ week beginning 1st october 2023

Swimming sessions will be offered to all our LASEP participants ("Lasepistes"), depending on the availability of the swimming pool.

To register your child, please download the form below by QR code and hand it in with the 40€ subscription fee to the LASEP manager at the beginning of the school year in September.

Contact:

For more information, please contact
Ms. Carole Ressleringer:
carole.resslinger@education.lu

Lasep Sandweiler account:
LU68 1111 0403 5503 0000



Associations page



Union Sportive Sandweiler FC

B.P.74
L-5201 Sandweiler

ussandweiler@hotmail.com
www.ussandweiler.com



Fanfare Sandweiler

49a, rue d'ltzig
L-5231 Sandweiler

E: fanfaresandweiler@gmail.com
www.fanfaresandweiler.lu

Jean-Paul Roeder
T: 621 50 66 35



Tennis Club Sandweiler

rue de la Gare
L-5218 Sandweiler

comite@tcsandweiler.lu
www.tcsandweiler.lu



Sandweiler Massendénger

by St Esprit Iewesch-Syr

17, rue Dicks
L-5216 Sandweiler

Monique Fischer
T: 35 72 46
monique.fischer@education.lu



Top Squash

25, rue de la Gare
L-5218 Sandweiler

nathan.sneyd@topsquash.lu
www.topsquash.lu

Nathan Sneyd
T: 35 71 81



Music Lessons

The UGDA music school provides music lessons for children. Enrolments for the 2024/2025 year will take place in June 2024. Deadline for enrolments: 30th May 2024.

A booklet with the enrolment form will be distributed to all households in the first half of May 2024.



Table tennis DT 71 Sandweiler

Hall sportif - 6, rue J-B Weicker
L-5255 Sandweiler

E: dtsandweiler@gmail.com

Joe Risch (secrétaire)
T: 621 32 97 25



Badminton

34, am Steffesgaart
L-5222 Sandweiler

E: info@bcsandweiler.lu
www.bcsandweiler.lu

Nadia Hermann-Olivi (présidente)
T: 621 26 41 18



Youth firefighters

113, rue d'ltzig
L-5231 Sandweiler

E: cissan-cadre@cgdis.lu



Lëtzebuerger Guiden a Scouten

Hellege Mäerten Sandweiler

Chalet rue de la Gare

E: fehmar@pt.lu

Marcel Fehlen
T: 621 19 71 22





Collaboration with the Parents' Association

Since its creation in 1998, the Parents' Association has shown great commitment to the interests of children attending Sandweiler elementary school.

Activities 2022/2023

- distribution of croissants on the first day of the school year
- organization of a Christmas market
- "Kuck a Klick" in cycle 2.1
- magic show
- help during school cups
- end-of-year fete for cycle 4.2
- school fete

Committee members

Chair: Julie Durand
Secretary: Laetitia Pettinato-
Treasurer: Dan Ciccarelli

Jeff Risch
Elisabete Rodrigues
Sylvia Verbiest
Sylvie Denayer
Isabelle Rossignol
Andriana Rasamoelimanana
Victorija Civilyte
Jessica Bauly-Sicre

To contact the Parents' Association, please write to them at the following address:
sev.sandweiler@gmail.com

Prevention and Safety activities

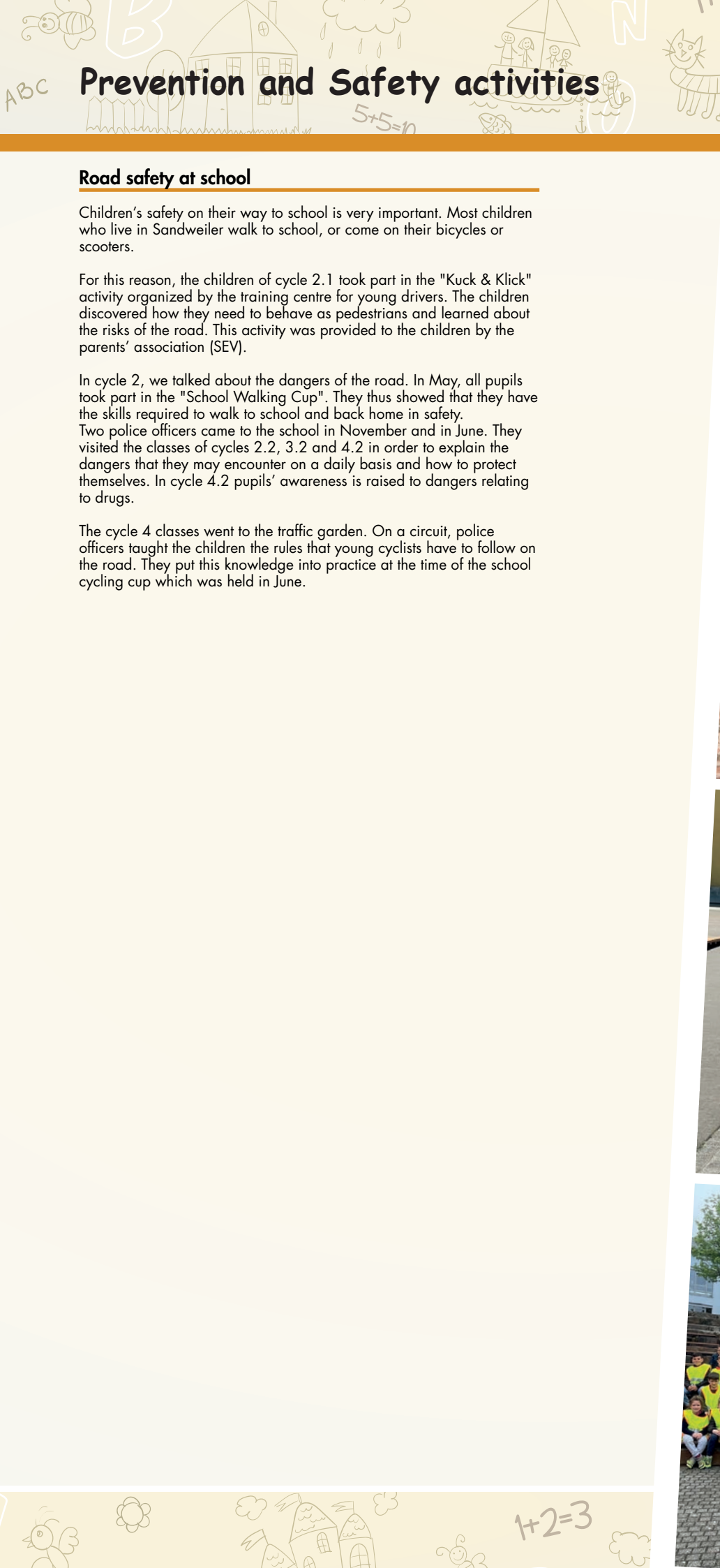
Road safety at school

Children's safety on their way to school is very important. Most children who live in Sandweiler walk to school, or come on their bicycles or scooters.

For this reason, the children of cycle 2.1 took part in the "Kuck & Klick" activity organized by the training centre for young drivers. The children discovered how they need to behave as pedestrians and learned about the risks of the road. This activity was provided to the children by the parents' association (SEV).

In cycle 2, we talked about the dangers of the road. In May, all pupils took part in the "School Walking Cup". They thus showed that they have the skills required to walk to school and back home in safety. Two police officers came to the school in November and in June. They visited the classes of cycles 2.2, 3.2 and 4.2 in order to explain the dangers that they may encounter on a daily basis and how to protect themselves. In cycle 4.2 pupils' awareness is raised to dangers relating to drugs.

The cycle 4 classes went to the traffic garden. On a circuit, police officers taught the children the rules that young cyclists have to follow on the road. They put this knowledge into practice at the time of the school cycling cup which was held in June.



Sports Week

In June, the school's pupils took part in sports week. The children played sports every day in the sports hall. Sports instructors also taught our pupils the basics of table tennis. The week ended with a running race. Parents sponsored them for each lap completed. In all, the pupils raised around €2,000.

The Sakaro representatives decided to make a donation to the "Wonschstät" and "Kriibskrank Kanner" foundations.

In July, the ambassadors of the "Wonschstät" foundation received a cheque for €1,000 in the presence of the pupils and teachers. The "Kriibskrank Kanner" foundation also received €1000.

We are very proud of our pupils and of their performance. Thanks to them and their commitment we have supported a good cause.





In July, the parents' association (SEV) organized the traditional school fête.
 Warm thanks to the parents who organized this fête and also to those who were present to supervise the games



Excursions and Camps



The cycle 1 classes spent a day at Esch in the Gaalgebierg municipal park.



The cycle 2.1 classes spent a day at the wonderful park in Bettembourg.



The cycle 2.2 classes went to "Robbesscheier" for three days.



One cycle 3.1 class visited the "Heringer Millen" in Mullerthal. The other went to the "Thillenvogtei" Museum in Rindschleiden.



The cycle 3.2 classes spent 3 days Marienthal.



One cycle 4.1 class and one cycle 4.2 class went to stay at The Hague in Belgium.



The cycle 4.1 classes and a cycle 4.2 class went to the "Phantasieland" amusement park in Germany.



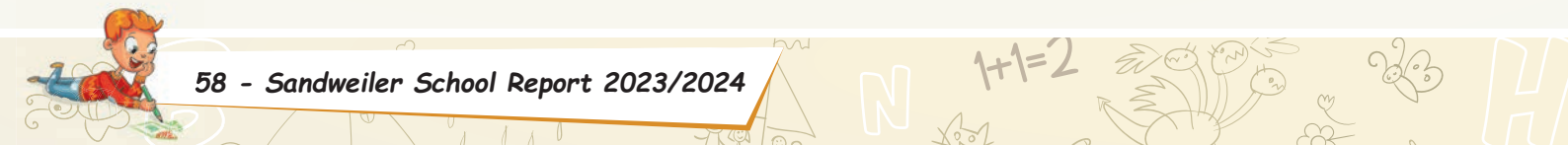
Class Photos 2022/2023



Early childhood: MULLER Anik, WEYAND-BACK Myriam



Early childhood: RONKAR Claudine, MULLER Carole, MEHLEN Tania





Cycle 1a: APEL Fabienne



Cycle 1b: MILLIM Valérie



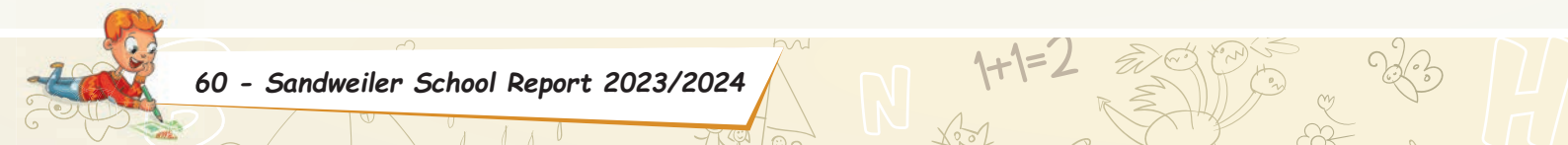
Class Photos 2022/2023



Cycle 1c: KOX Julie, WENNER Li



Cycle 1d: BEISSEL Jennifer





Cycle 2.1a: DECILLIA Nathalie



Cycle 2.1b: WENIGER Martine



Cycle 2.2a: FRIDEN Tanya



Cycle 2.2b: GALES Nadine



Cycle 3.1a: KARIGER Tanja, EISCHEN Linda



Cycle 3.1b: ROSENFELD Carole

Class Photos 2022/2023



Cycle 3.2a: GRETER Joëlle, KIRSCH Olivia



Cycle 3.2b: DINIS MARTINS Susana, DECKER Sandy



Cycle 4.1a: HOFFMANN Sarah, HOFFMANN Dan



Cycle 4.1b: MEERPOHL Christophe, HOFFMANN Sarah



We wish all pupils success on their school path!

Cycle 4.2a: EVEN Christian, RESSLINGER Carole



Departure of Cycle 4.2 Pupils



Cycle 4.2b: BARTHEL Sonja, EVEN Christian

Practical Information

Address of the Mairie (town hall)

18, rue Principale L-5240 Sandweiler

Address

B.P. 11 L-5201 Sandweiler

T: 35 97 11 - 1 E: info@sandweiler.lu
F: 35 79 66 www.sandweiler.lu

Municipal Council

BREUER Jacqueline, mayor

E: jacqueline.breuer@sandweiler.lu

MOUSEL Claude, alderman

E: claudemousel@sandweiler.lu

COURTOIS Corine, alderwoman

E: corine.courtois@sandweiler.lu

Dumong Romain, councillor
Lauer René, councillor
Lemmer Jean, councillor
Massard-Stitz Simone, councillor
Reuter Georges, councillor
Roeder Jean-Paul, conseiller
Thieben Anna, councillor
Thierer Jörg, councillor

Reception

Blau-Scheitler Nicole
T: 35 97 11 - 201
E: nicole.blau@sandweiler.lu

Secretariat

Nardecchia Pascal
Municipal secretary
T: 35 97 11 - 202
E: pascal.nardecchia@sandweiler.lu

Reinardt Claudine
Secretariat
T: 35 97 11 - 211
E: claudine.reinardt@sandweiler.lu

Wagener Joëlle
Secretariat
T: 35 97 11 - 204
E: joelle.wagener@sandweiler.lu

Huesmann Lilly
Secretariat
T: 35 97 11 - 219
E: liliane.huesmann@sandweiler.lu

Public relations

Schlienger Sébastien
T: 35 97 11 - 213
E: sebastien.schlienger@sandweiler.lu

Human resources

Reinardt Claudine
T: 35 97 11 - 211
E: claudine.reinardt@sandweiler.lu

Population Office / État civil (Civil

Registry)

Torres David
T: 35 97 11 - 203
F: 35 97 11 - 221
E: david.torres@sandweiler.lu

Schmit Marc
T: 35 97 11 - 208
F: 35 97 11 - 221
E: marc.schmit@sandweiler.lu

Education

Lang Sonja
Education department
T: 35 97 11 - 205
E: sonja.lang@sandweiler.lu

Municipal revenue

Sarcevic Ivan
Municipal collector
T: 35 97 11 - 230
E: ivan.sarcevic@sandweiler.lu

Technical Service Department

Secretariat
T: 35 97 11 - 223

Goedert Claude
T: 35 97 11 - 218
E: claud.goedert@sandweiler.lu

Hoffmann Marc
T: 35 97 11 - 225
E: marc.hoffmann@sandweiler.lu

Nilles Pit
T: 35 97 11 - 217
E: pit.nilles@sandweiler.lu

Karametovic Džemal
T: 35 97 11 - 212
E: dzemal.karametovic@sandweiler.lu

Environmental service

Moersch Adrien
T: 35 97 11 - 224
E: adrien.moersch@sandweiler.lu

Sandweiler School

Susana Dinis Martins, Chair of the School
Committee
T: 621 502 421
E: susana.dinis@education.lu

Maison relais (Childcare centre)

Rachel Manderscheid (cycle 1 - 4)
T: 35 97 11 - 403
T: 35 97 11 - 640
E: maison.relais@sandweiler.lu

Lidija Djurdjevic (cycle 1)
T: 35 97 11 402
E: lidija.djurdjevic@sandweiler.lu

Stefanie (Steffi) Fritz (cycle 2 - 4)
T: 35 97 11 641
E: stefanie.fritz@sandweiler.lu

Piwitsch Day Nursery

T: 35 69 49 41
E: creche@sandweiler.lu

Maison des Jeunes (Youth Centre)

T: 26 35 00 84
E: mdjsandweiler@inter-actions.lu



Use eco-friendly school stationery and office supplies!

Many environmentally-friendly products can be recognized by the "Clever akafen" label. Ecological supplies are those that:

- can be used for a long time
- can be repaired
- are non-toxic
- contain no or few dangerous pollutants
- can be recycled
- are packaged in an environmentally-friendly way
- have low energy consumption
- are sustainable

Please therefore use, for example:

- solar-powered calculators rather than battery-powered calculators
- notebooks, pads, folders and envelopes made from recycled paper and materials
- rulers and pencil sharpeners made of wood or metal
- solvent-free glues
- wooden pencils and wax crayons
- recycled PP punched pocket document holders

Positively assessed products and other information can be found at: www.clever-akafen.lu



18, rue Principale
L-5240 Sandweiler

T: 35 97 11 - 1
F: 35 79 66

E: info@sandweiler.lu
www.sandweiler.lu



No. 01-14-561533 – www.myclimate.org
© myclimate – The Climate Protection Partnership

